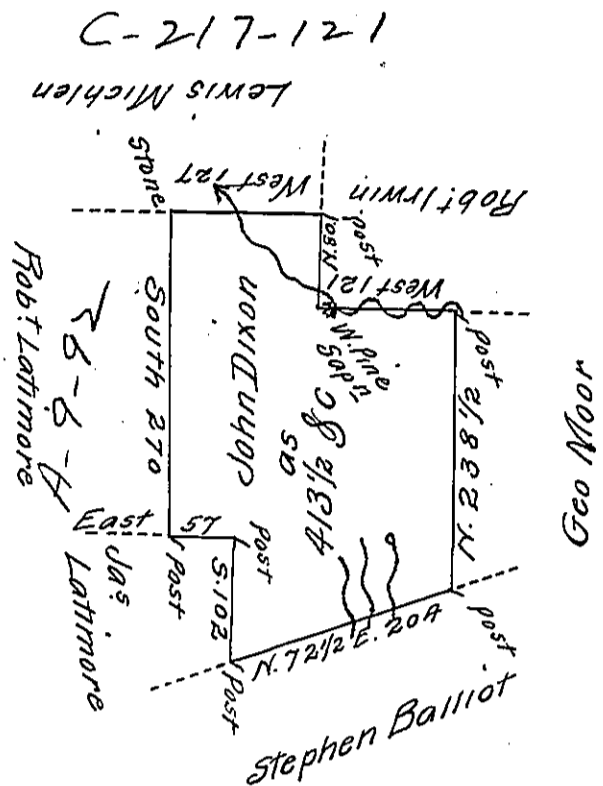


Hazle
Luzerne



A Draft of a tract of land Called _____ Situate adjoining land Surv^d
 for Jas Latimore and others in the County of Northum^d Containing
 four Hundred & thirteen Acres 1/2 & Allowance, Surveyed for John Dixon
 the 8th Day of Sep^r 1793 by Virtue of a Warrant dated the 13th Day of June 1793.

by W^m Gray D.S.

To Daniel Brodhead Esq^r }
 Surr^r. Gen' }

IN TESTIMONY that the above is a copy of the original remaining on file in
 the Department of Internal Affairs of Pennsylvania, made
 conformably to an Act of Assembly approved the 16th day of
 February, 1833, I have hereunto set my Hand and caused
 the Seal of said Department to be affixed at Harrisburg,
 this Fifth day of April 1911

Henry Howell
 Secretary of Internal Affairs.